

Keppel Infrastructure Trust

Annual General Meeting

14 April 2016

Key Milestones

Keppel Infrastructure Trust

1

Combination between KIT and CIT

2

Singapore largest S\$525m EFR in 2015

3

Acquisition of 51% of KMC

4

Inclusion in FTSE ST Large/Mid Cap Index

5

Renewal of KIFM's board

Diversified portfolio of core infrastructure assets

Waste Management



Senoko Plant

- Only waste incineration plant located outside of the Tuas area
- Capacity of 2,205 tonnes/day



Tuas DBOO Plant

- Newest of the four waste incineration plants currently operating in Singapore
- Capacity of 800 tonnes/day

Water and Wastewater Infrastructure



Ulu Pandan Plant

- One of Singapore's largest NEWater plants
- Daily capacity of 148,000m³

Power Generation, Electricity Transmission and Gas



KMC

- A top-tier gas-fired 1,300MW CCGT plant in Singapore
- 15-year CTA with maximum capacity fee of S\$108m a year

Telecoms Infrastructure



DataCentre One

- 214,000 square feet Uptime Institute Tier 3 certified datacentre



CityNet

- Mandate to act as the trustee-manager of NetLink Trust



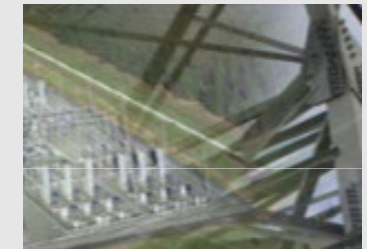
SingSpring

- Singapore's first large-scale seawater desalination plant
- Daily capacity of 136,380m³



City Gas

- Sole producer and retailer of town gas in Singapore
- Over 750,000 customers



Basslink

- Only electricity interconnector between Tasmania and mainland Australia

Financial Highlights

2H2015 DPU: 1.86 cents

Annualised 2015 DPU Yield: 7.5%

Unit Price: S\$0.495

Market Cap: S\$1,909m

NAV per Unit: 35.3 cents

Total NAV: S\$1,360m

2H2015 Adj EBITDA⁽¹⁾: S\$141.6m

2H2015 Attributable Profit: S\$12.8m

⁽¹⁾ Includes reduction in lease and concession receivables

Business Highlights in 2015 and 1Q 2016

| Units | Business updates |
|--------------------|---|
| City Gas | <ul style="list-style-type: none">• Customer base grew by 3.5% to ~750k with total gas sales of 1.27b kwh during 9M2015• Achieved 100% plant availability |
| Concessions | <ul style="list-style-type: none">• Consist of Senoko WTE, Tuas WTE, SingSpring and Ulu Pandan NEWater in Singapore• Fulfilled contractual obligations• Water plants successfully met higher demand in 2015• 3 out of 6 boilers completed upgrade in Senoko WTE as at end March 2016 |
| KMC | <ul style="list-style-type: none">• Achieved 100% plant availability in 2015• Achieved availability of 95.1% in 1Q 2016 |
| DC One | <ul style="list-style-type: none">• Construction completed and handed over to the customer in April 2016 |
| Basslink | <ul style="list-style-type: none">• Outage on 20 Dec 2015 due to cable fault incident• Repairs underway with estimated return to service in June 2016 |